

LUSHNA Petite Reflect

Complete surrounding of nature with the reflective wall and panoramic bed view.



CONNECTION TO NATURE
full panoramic window wall

SURROUNDING OF NATURE
Mirror reflective inner wall

UNIQUE DESIGN, FULL COMFORT
queen-size bed and openness to terrace

ENSUITE BATHROOM
Toilet and shower

FOUR SEASONS PRODUCT
Eco wood fiber insulation

TOP NATURAL MATERIALS
larch and spruce wood

All-in-one Eco wooden design cabin with all the comforts in minimum space with included bathroom.

Deep immersion into nature. Distinctive Lushna full glass wall window with reflective mirror creates a feeling of living in nature with top comfort and maximum functionalities in minimum space.

Glamping cabin for 2 adults with full connection to the nature, natural materials, smart interior design and affordable price. Fully equipped bathroom inside.

LUSHNA®

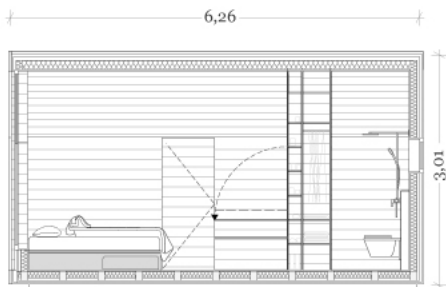
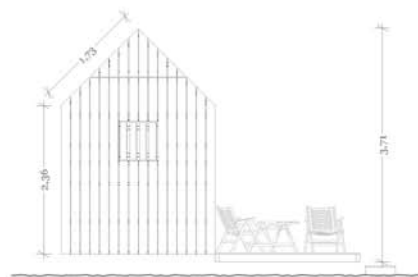
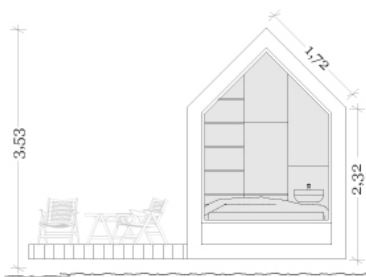
LUSHNA Petite Reflect

All-in-one Eco wooden design cabin with included bathroom.



6,3 x 2,43 x 3,53 m, 11 m² **SIZE**
massive wood **MATERIAL**
50 mm wood fibers **ECO INSULATION**

ECO FOUNDATION ground screws - concrete free
FULLY EQUIPPED bed, bathroom, toilet, wardrobe, refrigerator
CAPACITY 2 adults



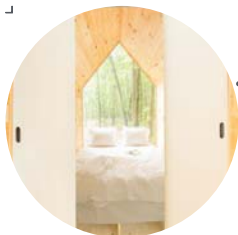
LUSHNA Petite Reflect: Features



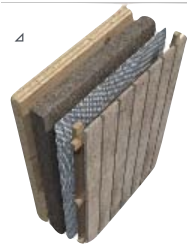
General lighting and power plugs



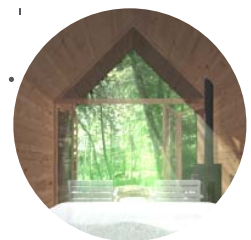
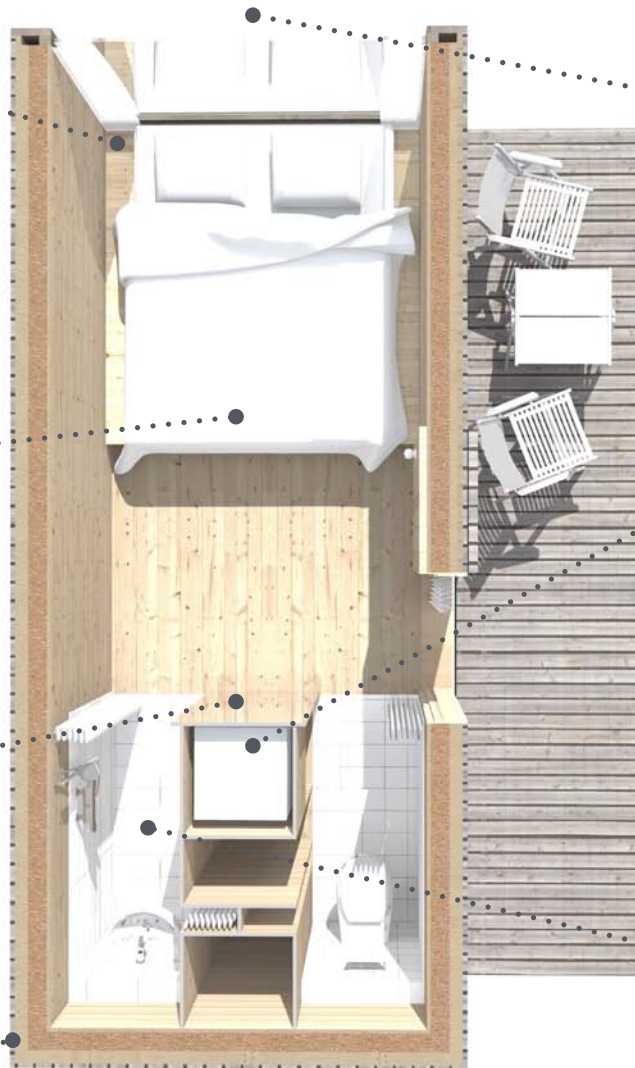
Storage space



Mirror wall reflecting outdoors



Quality construction, insulated for coldest winters



Bedroom in nature front glass wall - full window opening

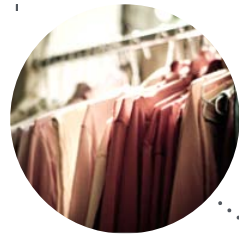


Compact Furniture (wardrobe + refrigerator + electric water, heater /AC option)



Small but spacious bathroom

LUSHNA Petite Reflect: Equipment



Wardrobe



Water heater and AC



Toilet



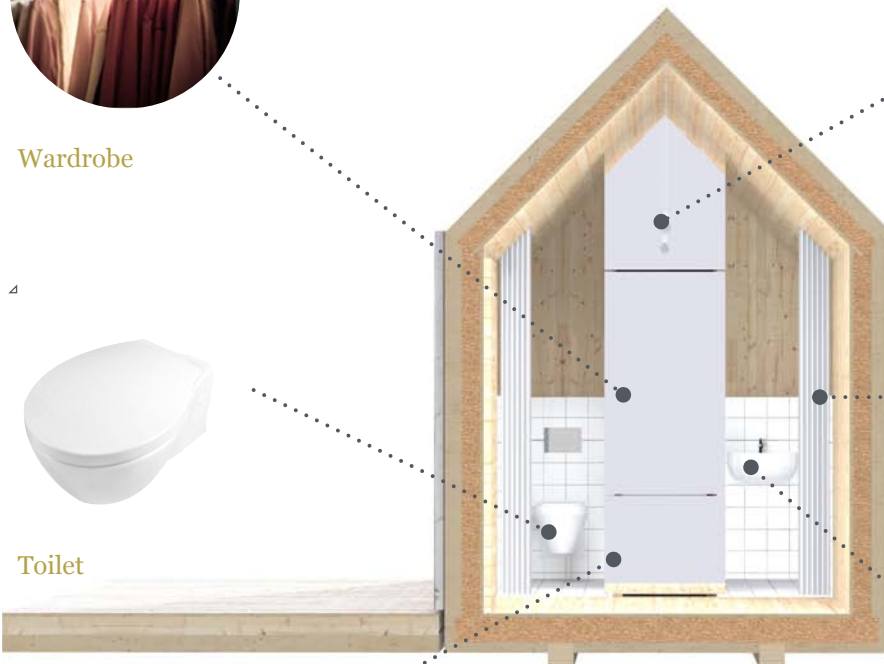
Shower cabin



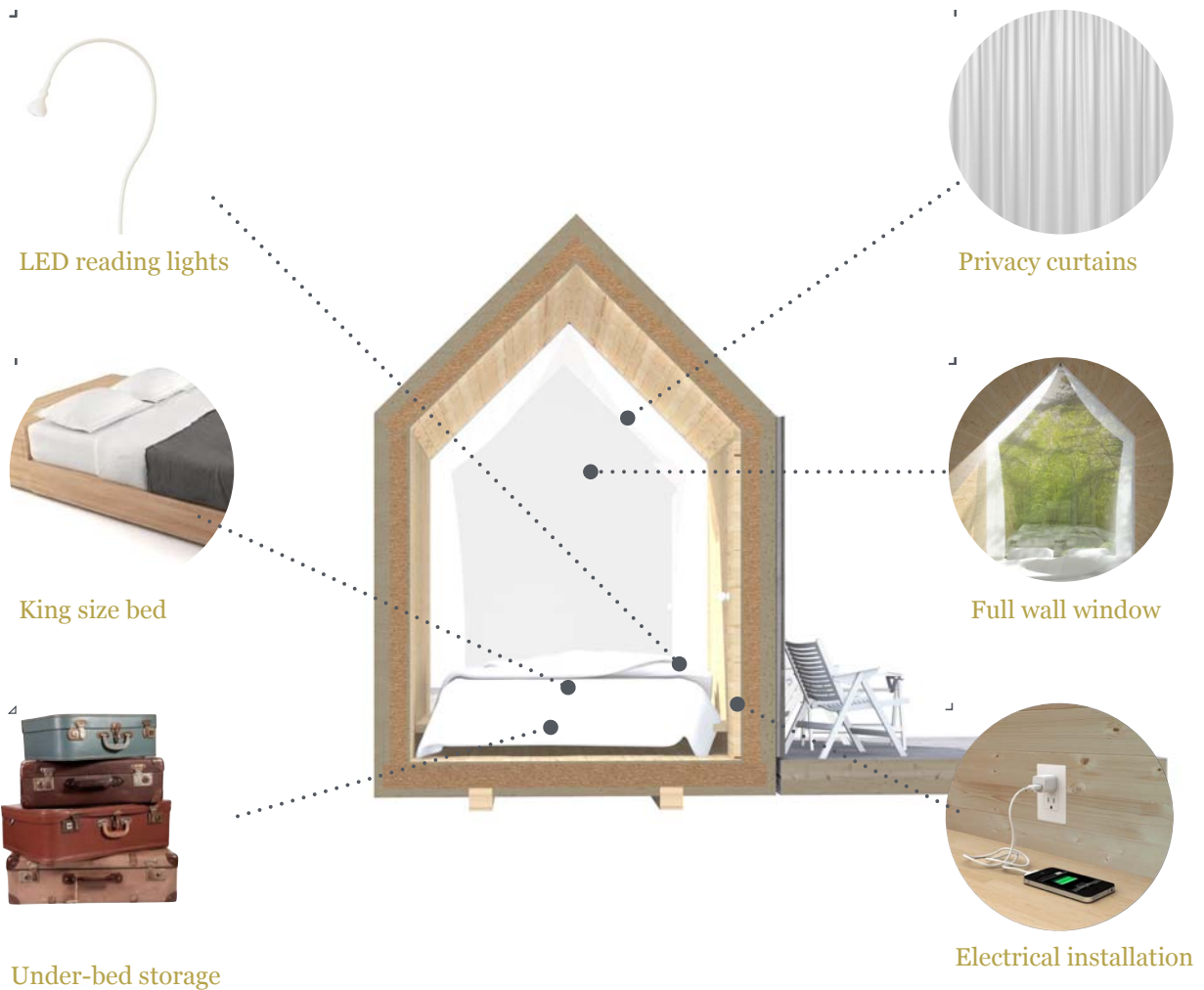
Place for refrigerator



Ceramic basin



LUSHNA Petite Reflect: Equipment



all furniture massive wood MATERIALS
 electric boiler HOT WATER
 220/110 V fusebox ELECTRICITY

SEWAGE grid connection or autonomous
 MAINTENANCE minimal – natural untreated wood
 HEATING electrical heater and AC



Textile quality

All Textile Elements Including zips have up to 2 years guarantee.



Roof quality

Up to five years guarantee on all the roofs.



Long lasting

All our products are built to last with the best quality materials. Therefore, construction elements are guaranteed for up to 10 years.



Eco construction

All Lushna products are made from natural and ecological materials. The use of wood as the main material in all Lushna products reduce CO2 emissions considerably.

LUSHNA Petite: Technical specifications

FLOOR CONSTRUCTION	<ul style="list-style-type: none">• Wooden flooring thickness 32mm, spruce AB, 2x oiled• Vapour barrier Sd = 10m• Massive wood construction studs• Insulation Wood fibers STEICO flex 12 cm• OSB board 12 mm
WALLS	<ul style="list-style-type: none">• Interior wooden cladding, tongue / groove thick. 20mm, spruce AB, 1x oiled• Vapour barrier Sd = 10m• Massive wood construction studs• Wood fibers STEICO flex 12 cm @ 65cm• OSB board 12 mm
ROOF	<ul style="list-style-type: none">• Interior wooden cladding, tongue / groove thick. 20mm, spruce AB, 1x oiled• Vapour barrier Sd = 10m• Glue-laminated construction studs KVH 8 / 8 cm @ 65cm• Wood fibers STEICO flex 12 cm• OSB board, thick 12mm• 1x EPDM waterproof membrane roofing
INNER WALLS	<ul style="list-style-type: none">• 19 mm massive 3 layered board
INTERIOR FURNITURE-BED	<ul style="list-style-type: none">• 19 mm massive 3 layered board
BATHROOM equipment	<ul style="list-style-type: none">• Sanitary kit: ceramic WC, ceramic basin, shower plate faucet with a handle.
SMART BOX CONCEPT	<ul style="list-style-type: none">• All in one wooden furniture including wardrobe, folding dining table, kitchen space and shelves equipped with electrical sockets for refrigerator, cooking plate etc
ELECTRICITY INSTALLATION	<ul style="list-style-type: none">• Robust electrical fuse box with electrical box, 6x plugins, 5x light.
LIGHTS	<ul style="list-style-type: none">• 2 LED reading lights• General light
FRONT GLASS	<ul style="list-style-type: none">• Two layered glass U= 1,1 with wooden frame.
EXTERIOR	<ul style="list-style-type: none">• Siberian Larch wood boards
FOUNDATIONS* (optional)	<ul style="list-style-type: none">• Krinner ground-screws with dimensions and length depending on type of soil of location.

LUSHNA Petite: FAQ



What is included in the BASIC price per unit?

Basic price includes the structure, roof, facades, sanitary kit, shower plate, electricity , lighting, kitchenette furniture and bed platforms. Foundations, transport and installation are not included in the basic price. Upon request we can provide a complete solution including our “Ground Screw foundation system”, ecological and concrete free.

Is it wired/able to have heat, AC, fan, electricity, water?

Electrical, water and sewage installation, lighting, connections and sockets are included in the basic price.

What preparation for the placement of Vilas needs to be made?

You don't need to pre-prepare your land. We can adapt to the topography. Nevertheless we need you to provide connections for electricity, water and sewage for this unit. We can offer the complete support on designing and planning your destination.

Foundations

We use ecological Ground Screws Foundation from Krinner, Germany. We just screw the foundations to ground and place the cabins on the screws and bind them together. In this way no pre-preparation of the location is necessary. We don't damage the location and cabins can be moved to the other location without major visible signs on the previous location.

Warranty

5 years on construction and the roof.