

# LUSHNA Suite Glass

Traditional forests cottage reinvented for the most pristine contact with nature.



**CONNECTION TO NATURE**  
full panoramic window wall

**GLASS BATHROOM ISLAND**  
for toilet, shower

**UNIQUE DESIGN, FULL COMFORT**  
queen-size bed and openness to terrace

**TOP NATURAL MATERIALS**  
larch and pine wood

**FOUR SEASONS PRODUCT**  
12 cm eco insulation

**COSY**  
small but spacious

A complete glamorous experience in nature with the comfort of a hotel suite.

Designed for the most demanding glampers who search for an intimate space. The central-space is occupied by a king size bed perfect for romantic indulging with the view on ever-changing drama of mother nature. Lushna suite is equipped with shower, toilette, and a kitchenette.

## LUSHNA®

Lushna ® / T: +386(0)30440330 / E: info@lushna.com / www.glamping-lushna.com /  
Vodnikova cesta 38, 1000 Ljubljana / Slovenia

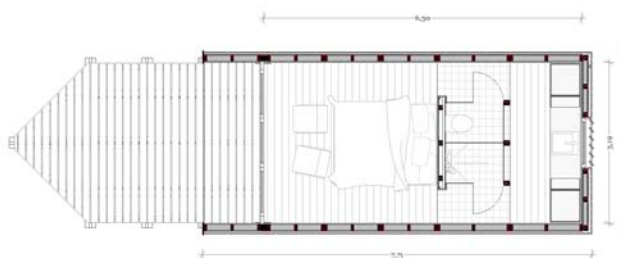
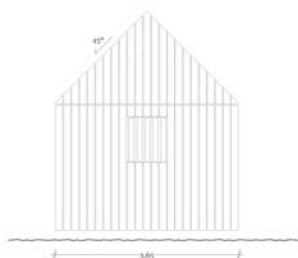
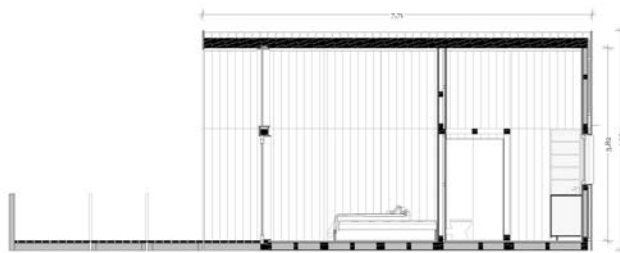
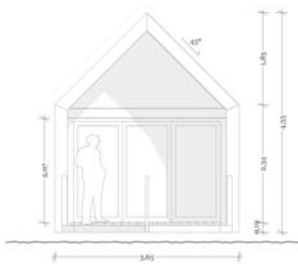
# LUSHNA Suite Glass

Seamless connection to Nature

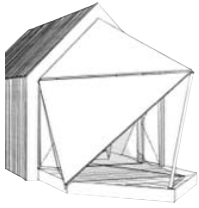


7.71/3.65/4.35 m, 19 m<sup>2</sup> net **SIZE**  
indoor and facades **MASSIVE WOOD MATERIAL**  
Light frame **CONSTRUCTION**  
12 cm **ECO INSULATION**

**SPACIOUS** Loft feeling of freedom  
**GLASS ISLAND** milk glass toilet and shower  
**CAPACITY** 2 people  
**ECO FOUNDATION\*** Ground screws - concrete free



# LUSHNA Suite Glass: Features



Privacy, sun and wind screen (optional)



Fireplace heating and ambient (optional)



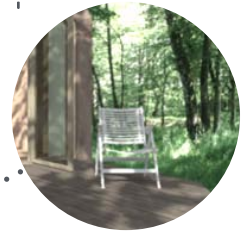
Lounge chairs and coffee table (optional)



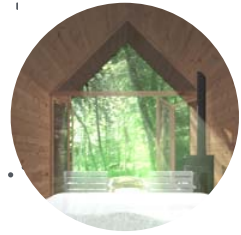
Electric installation



Quality construction, insulated for coldest winters



Terrace - living space extension (optional)



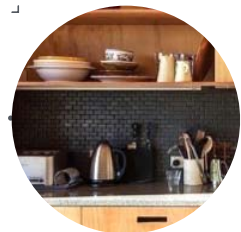
Bedroom in nature front glass wall - full window opening



Cosy kingsize canopy bed



Small but spacious bathroom

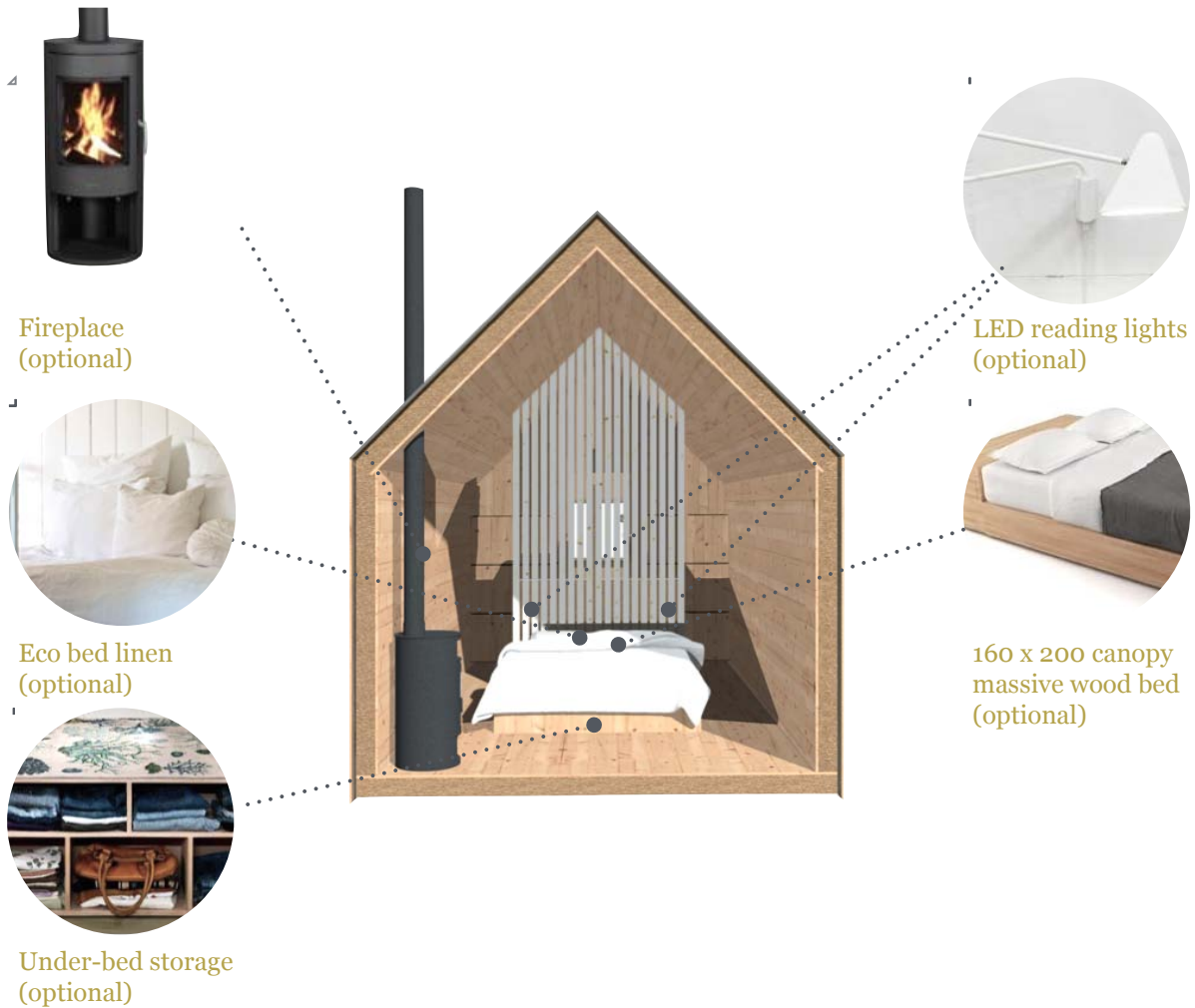


Hidden kitchenette

# LUSHNA Suite Glass: Equipment



# LUSHNA Suite Glass: Optional Equipment



Fireplace  
(optional)

LED reading lights  
(optional)

Eco bed linen  
(optional)

160 x 200 canopy  
massive wood bed  
(optional)

Under-bed storage  
(optional)

all furniture massive wood MATERIALS  
electric heater HOT WATER  
220/110 V fuse box ELECTRICITY

SEWAGE grid connection or autonomous  
MAINTENANCE none – natural untreated wood  
HEATING fireplace or electrical heater



### **Textile quality**

All Textile Elements  
Including zips have up to  
2 years guarantee.



### **Roof quality**

Up to five years guarantee  
on all the roofs.



### **Long lasting**

All our products are built  
to last with the best  
quality materials.



### **Eco construction**

All Lushna products are  
made from natural and  
ecological materials. The  
use of wood as the main  
material in all Lushna  
products reduce CO2  
emissions considerably.

# LUSHNA Suite Glass: Technical specifications

FLOOR CONSTRUCTION	<ul style="list-style-type: none"><li>• Wooden flooring thickness 20mm, spruce AB, 2x lacquered</li><li>• Vapour barrier Sd = 10m</li><li>• Massive wood construction studs</li><li>• Wood fibres insulation STEICO flex 12 cm</li><li>• OSB board 15mm</li></ul>
WALLS	<ul style="list-style-type: none"><li>• Interior wooden cladding, tongue / groove thick. 20mm, spruce AB, 1x wood stained.</li><li>• Vapour barrier Sd = 10m</li><li>• Massive wood construction studs</li><li>• Insulation wood fibres STEICO flex 14cm</li><li>• OSB board 15mm</li></ul>
ROOF	<ul style="list-style-type: none"><li>• Interior wooden cladding, tongue / groove thick. 20mm, spruce AB, 1x wood stained.</li><li>• Vapour barrier Sd = 10m</li><li>• Massive wood construction studs</li><li>• Insulation wood fibres STEICO flex 14cm</li><li>• OSB board, thick 15mm</li><li>• 1x EPDM waterproof membrane roofing</li></ul>
INTERIOR DOORS AND WALLS Bathroom and toilet	<ul style="list-style-type: none"><li>• Glass walls*, 8mm, on hinges</li><li>*options: printed glass, additional wooden cladding</li></ul>
INTERIOR FURNITURE-BED* (optional)	<ul style="list-style-type: none"><li>• 19 mm massive wood Tilly board thick. 19mm with milled grooves.</li><li>• All 2x oiled</li></ul>
BATHROOM equipment	<ul style="list-style-type: none"><li>• Sanitary kit: Geberit-Duofix, ceramic WC, ceramic basin, shower plate faucet with a handle.</li></ul>
KITCHEN	<ul style="list-style-type: none"><li>• Wooden floor</li><li>• Wooden furniture, kitchen cabinets, shelves and kitchen countertop</li></ul>
ELECTRICITY INSTALLATION	<ul style="list-style-type: none"><li>• Robust electrical fuse box with electrical box, 6x plugins, 5x light, connections kitchen.</li></ul>
LIGHTS	<ul style="list-style-type: none"><li>• LED reading lights</li><li>• General light</li></ul>
FRONT GLASS	<ul style="list-style-type: none"><li>• Two layered glass U= 1,1 with wooden frame and glazing strips. Rear window 100/100 cm wooden.</li></ul>
EXTERIOR WOOD	<ul style="list-style-type: none"><li>• Larch wood in façade and terrace floor</li><li>• Larch wood battens coloured in black.</li><li>• UV membrane with glued connections</li></ul>
FOUNDATIONS	<ul style="list-style-type: none"><li>• Krinner ground-screws with dimensions and length depending on type of soil of location.</li></ul>

# LUSHNA Suite Glass: FAQ



## **What is included in the BASIC price per unit?**

Basic price includes the structure, roof, facades, sanitary kit, shower plate, electricity and lighting. There is an additional cost for furniture, kitchenette and bedding accessories. Foundations, transport and installation are not included in the basic price. Upon request we can provide a complete solution including our "Ground Screw foundation system", ecological and concrete free.

## **Is it wired/able to have heat, AC, fan, electricity, water?**

Electrical, water and sewage installation, lighting, connections and sockets are included in the basic price.

## **What preparation for the placement of Vilas needs to be made?**

You don't need to pre-prepare your land. We can adapt to the topography. Nevertheless we need you to provide connections for electricity, water and sewage for this unit. We can offer the complete support on designing and planning your destination.

## **Foundations**

We use ecological Ground Screws Foundation from Krinner, Germany. We just screw the foundations to ground and place the cabins on the screws and bind them together. In this way no pre-preparation of the location is necessary. We don't damage the location and cabins can be moved to the other location without major visible signs on the previous location.

## **Warranty**

10 years on construction and 5 years on the roof.