

LUSHNA Suite Mezzanine Lux

Traditional forests cottage reinvented for the most pristine contact with nature.



CONNECTION TO NATURE
full panoramic window wall

WOODEN MOBILE HOME
toilet, shower and kitchen inside

UNIQUE DESIGN, FULL COMFORT
Living room and mezzanine bedroom

TOP NATURAL MATERIALS
larch and spruce wood

FOUR SEASONS PRODUCT
12 cm eco insulation

COSY
Small but spacious with 2 or 4 person
sleeping comfort

A complete glamorous experience in nature with the comfort of a hotel suite.

Designed for the most demanding glampers who search for an intimate space. The lower deck is occupied by sofa bed and coffee table with seamless access to the terrace and nature. In the mezzanine you can find a cozy king size bed with the view to the outside. Sofa bed can transform to bed at and thus offering a sleeping space for 4 people.

Lushna Suite Mezzanine is equipped with shower, toilette, and small kitchen.

LUSHNA®

Lushna ® / T: +386(0)40214579 / E: info@lushna.com / www.glamping-lushna.com /
Vodnikova cesta 38, 1000 Ljubljana / Slovenia

LUSHNA Suite Mezzanine Lux

Glamping experience cottage with living room and mezzanine bedroom



8,19/3,65/4,35 (26.87/11.97/14.27) 25 m2 net,
15 m2 terrace **SIZE**

massive wood **MATERIAL**

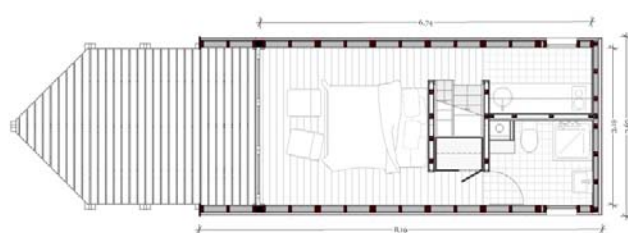
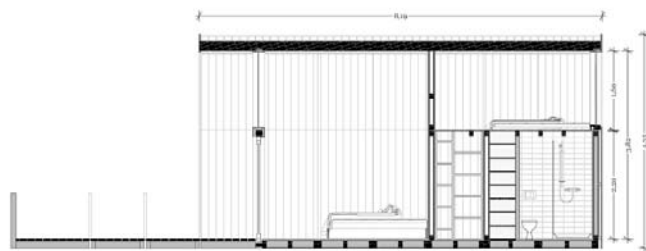
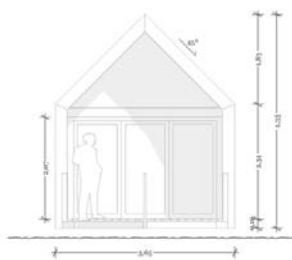
Modular **CONSTRUCTION**

ALL IN ONE toilet, shower and kitchenette inside.

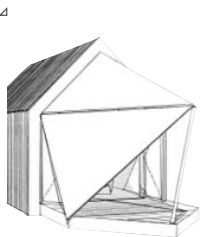
CAPACITY 2 adults + 2 children

12 cm wood fibers **ECO INSULATION**

ECO FOUNDATION* ground screws - concrete free



LUSHNA Suite Mezzanine Lux: Features



Privacy, sun and wind screen (optional)



Quality construction, insulated for coldest winters



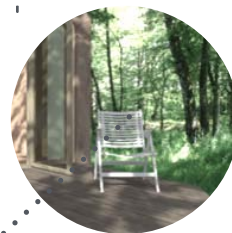
Lounge chairs and coffee table (optional)



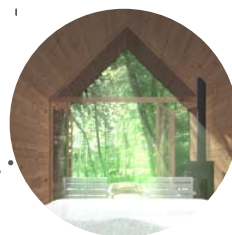
Electric installation



Small but spacious bathroom



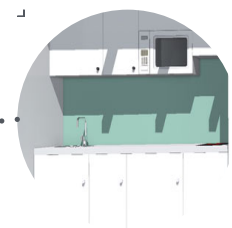
Terrace - living space extension (optional)



Bedroom in nature front glass wall - full window opening



A cosy sofa



Spacious kitchen

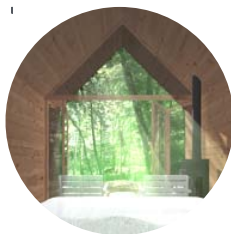
LUSHNA Suite Mezzanine Lux: Features



A cosy sofa



wooden stairs to
mezzanine



bedroom in nature
back window



bedroom in nature
front glass wall -
full window opening



160x200 massive
wood platform



LUSHNA Mezzanine Suite Lux: Kitchen & living room



Mezzanine bed wooden platform



Air ventilation hood (optional)



Electric water kettle (optional)



A cosy sofa (optional)



LED reading lights



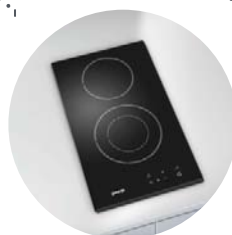
Kitchen sink with a faucet



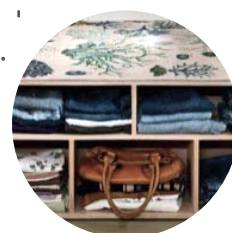
Integrated dish washer (optional)



Integrated refrigerator (optional)



2 x glass cooking plate (optional)



Under-bed storage (optional)



Kitchen cabinet space

LUSHNA Mezzanine Suite Lux: Bathroom



Wardrobe with mirror (optional)



Ceramic toilet



Glass shower cabin



Ceramic Basin



all furniture massive wood MATERIALS
electric heater HOT WATER
220/110 V fuse box ELECTRICITY

SEWAGE grid connection or autonomous
MAINTENANCE none – natural untreated wood
HEATING electrical heater



Textile quality

All Textile Elements
Including zips have up to
2 years guarantee.



Roof quality

Up to five years guarantee
on all the roofs.



Long lasting

All our products are built
to last with the best
quality materials.



Eco construction

All Lushna products are
made from natural and
ecological materials. The
use of wood as the main
material in all Lushna
products reduce CO2
emissions considerably.

LUSHNA Mezzanine Suite Lux : Technical specifications

FLOOR CONSTRUCTION

- Wooden flooring thickness 32mm, spruce AB, 2x oiled
- Vapour barrier Sd = 10m
- Gluelam construction studs
- Wood fibers STEICO flex 12cm
- Fiber wood board "agepan" DWD

WALLS

- Wooden flooring thickness 32mm, spruce AB, 2x oiled
- Vapour barrier Sd = 10m
- Gluelam construction studs KVH 8 / 12cm @ 65cm
- Wood fibers STEICO flex 12 cm
- Fiber wood board "agepan" DWD

ROOF

- Interior wooden cladding, tongue / groove thick. 180mm, spruce AB, 1x oiled
- Vapour barrier Sd = 10m
- Glue-laminated construction studs KVH 8 / 12cm @ 65cm
- Wood fibres STEICO flex 12cm
- OSB board, thick 15mm
- 1x EPDM waterproof membrane roofing

BATHROOM AND KITCHEN CLADDING

- Ceramic tiles on the floor and partially walls

EXTERIOR WOOD

- Larch wood in façade and terrace floor in different dimensions 20/60, 20/110, 32/40, 60/32.
- Larch wood battens coloured in black.
- UV membrane with glued connections

FRONT & BACK GLASS

- Two layered glass U= 1,1 with wooden frame and glazing strips. Rear window 60/100 cm wooden.

INTERIOR BATHROOM DOORS

- Glass walls*, 10mm, on hinges
- *options: printed glass, additional wooden cladding

INTERIOR FURNITURE-BED

- 19 mm massive wood Tilly board thick. 19mm with milled grooves.
- All 2x oiled

BATHROOM equipment

- Sanitary kit: Geberit-Duofix, ceramic WC, ceramic basin, shower plate faucet with a handle.

*KITCHEN (optional)

- Ceramic cooking plate, fridge and electric water cattle.

ELECTRICITY INSTALLATION

- Robust electrical fuse box with electrical box, 6x plugins, 5x light, connections kitchen.

LIGHTS

- 4 LED reading lights
- General light

*FOUNDATIONS (optional)

- Krinner ground-screws with dimensions and length depending on type of soil of location.

LUSHNA Suite Mezzanine Lux: FAQ



What is included in the BASIC price per unit?

Basic price includes the structure, roof, facades, sanitary kit, shower plate, electricity and lighting. There is an additional cost for furniture, kitchenette and bedding accessories. Foundations, transport and installation are not included in the basic price. Upon request we can provide a complete solution including our "Ground Screw foundation system", ecological and concrete free.

Is it wired/able to have heat, AC, fan, electricity, water?

Electrical, water and sewage installation, lighting, connections and sockets are included in the basic price.

What preparation for the placement of Vilas needs to be made?

You don't need to pre-prepare your land. We can adapt to the topography. Nevertheless we need you to provide connections for electricity, water and sewage for this unit. We can offer the complete support on designing and planning your destination.

Foundations

We recommend and install ecological Ground Screws Foundation from Krinner, Germany. We just screw the foundations to ground and place the cabins on the screws and bind them together. In this way no pre-preparation of the location is necessary. We don't damage the location and cabins can be moved to the other location without major visible signs on the previous location.

Warranty

10 years on construction and 5 years on the roof.