

LUSHNA Suite PopUp

Mobile glamping cottage reinvented for the most pristine contact with nature.



CONNECTION TO NATURE
full panoramic window wall

STRONG & LIGHT
Wooden structure with canvas roof.

UNIQUE DESIGN, FULL COMFORT
king-size bed with the outdoor view

WOODEN MOBILE HOME
Private toilet with shower included inside

POP UP CONCEPT
Fast assembly and easy to transport

SPACIOUS
Loft feeling of freedom

A complete glamorous experience in nature with the comfort of a hotel suite.

Designed for the most demanding glampers who search for an intimate space. The central-space is occupied by a king size bed perfect for romantic indulging with the view on ever-changing drama of mother nature.

Lushna Suite Pop-up is equipped with shower and toilette.

LUSHNA®

LUSHNA Suite PopUp

Framing the nature for unforgettable luxury stay



7/3.6/4.3 m (22.96/11.81/14.1 ft.) 19 m2 net **SIZE**

ALL IN ONE Toilet & shower inside.

Modular **CONSTRUCTION**

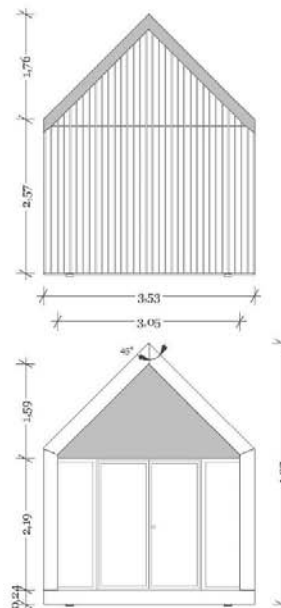
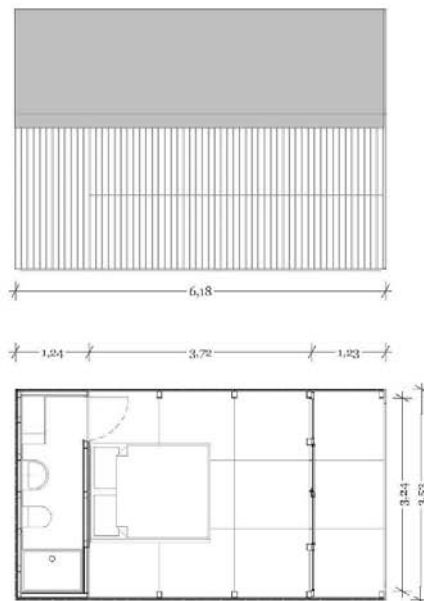
Easy to transport & **FAST ASSEMBLY**

WOOD MATERIAL indoor and facades

CANVAS ROOF waterproof, fire retardant

CAPACITY 2 people

ECO FOUNDATION* Ground screws - concrete free



LUSHNA Suite PopUp: Features



Full front plexi glass wall with direct access to terrace



Electric installation



Wooden functional cabinet



Cosy king-size bed* (optional)



Waterproof roof canvas & wooden facade



Spacious shower

220/110 V fuse box **ELECTRICITY**
electric heater **HOT WATER**

SEWAGE & WATER grid connection
NATURAL all built in wood accept the roof



Textile quality

All Textile Elements
Including zips have up to
2 years guarantee.



Eco construction

All Lushna products are made from natural and ecological materials. The use of wood as the main material in all Lushna products reduce CO2 emissions considerably.

LUSHNA Suite PopUp: Technical specifications

STRUCTURE	<ul style="list-style-type: none">• Spruce wooden structure quick to assemble
FLOOR CONSTRUCTION	<ul style="list-style-type: none">• Birch plywood panels 21mm lacquered
WALLS	<ul style="list-style-type: none">• Interior of birch plywood panels• Exterior in pine boards with brown colour lazure UV protection
ROOF	<ul style="list-style-type: none">• Water proof canvas 450 gr/m2
INNER WALLS of SANITARY BLOCK	<ul style="list-style-type: none">• Washable vinyl cladding
INTERIOR DOORS	<ul style="list-style-type: none">• 5+5 mm acrylic glass (plexi) or glass
INTERIOR FURNITURE-BED*	<ul style="list-style-type: none">• 18 mm birch plywood.• All 2x lacquered• *not included in base Price.
BATHROOM equipment	<ul style="list-style-type: none">• Sanitary kit: Geberit-Duofix, ceramic WC, ceramic basin, shower plate, faucet with a handle, wooden cabinet, electric boiler.
ELECTRICITY INSTALLATION	<ul style="list-style-type: none">• 220/110 v installation with fuse box.
LIGHTS	<ul style="list-style-type: none">• 2x LED reading lights• General light
FRONT GLASS	<ul style="list-style-type: none">• Front double sash door with wooden frame.
FOUNDATIONS*	<ul style="list-style-type: none">• Krinner ground-screws with dimensions and length depending on type of soil of location. Not included in base Price.

LUSHNA Suite PopUp: FAQ



What is included in the BASIC price per unit?

Basic price includes the structure, roof, facades, sanitary kit, shower plate, electricity and lighting. There is an additional cost for furniture and bedding accessories. Transport and installation are not included in the basic price. The basic price also includes steel legs as a foundation solution for a temporary use.

Is it wired/able to have heat, AC, fan, electricity, water?

Electrical, water and sewage installation, lighting, connections and sockets are included in the basic price. Electric fan or AC is additional equipment.

What needs to be pre-prepared for quick set up and usage of the units?

We need you to provide connections for electricity, water and sewage for this unit. The units come with connectors adapted to the country and are ready to connect.

What preparation of location and foundations needs to be made?

The units are placed on steel foundation legs with the levelling options of max. 15 cm. What you need to prepare is solid material parts or chocks to support the legs and enable to level the foundations. For a long term solution, upon request, we can provide our "Ground Screw foundation system", ecological and concrete free.

Warranty

2 years on construction and on the roof.